

82.3333° W 82.3167° W 82.3° W 82.2833° W 82.2667° W 82.25° W 82.2333° W 82.2167° W 82.2° W 82.1833° W 82.1667° W

39.5833° N  
39.5667° N  
39.55° N  
39.5333° N  
39.5167° N  
39.5° N  
39.4833° N  
39.4667° N

39.5833° N  
39.5667° N  
39.55° N  
39.5333° N  
39.5167° N  
39.5° N  
39.4833° N  
39.4667° N

**Easy**

**Moderate**

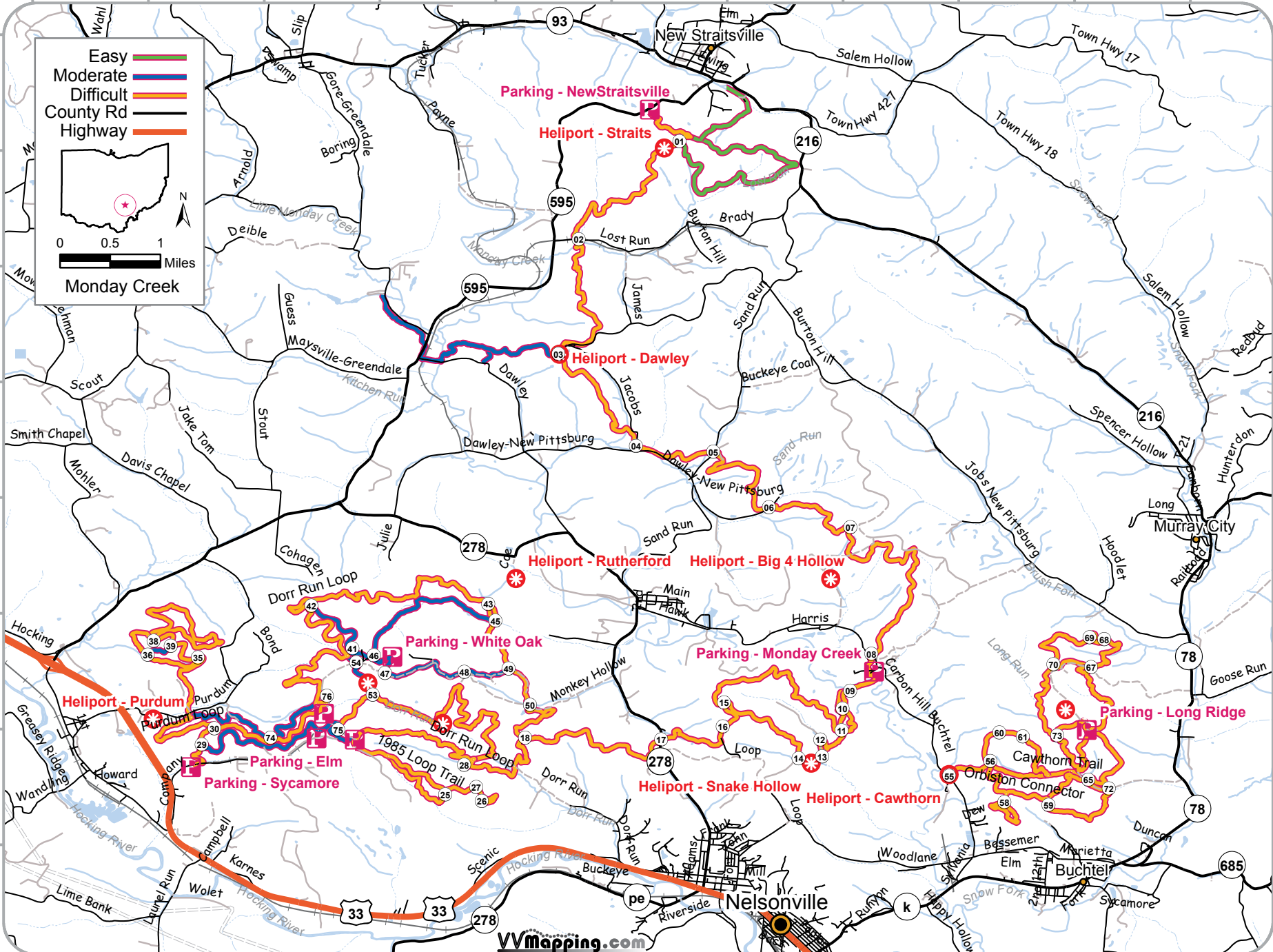
**Difficult**






**County Rd**


**Highway**

0 0.5 1 Miles

**Monday Creek**

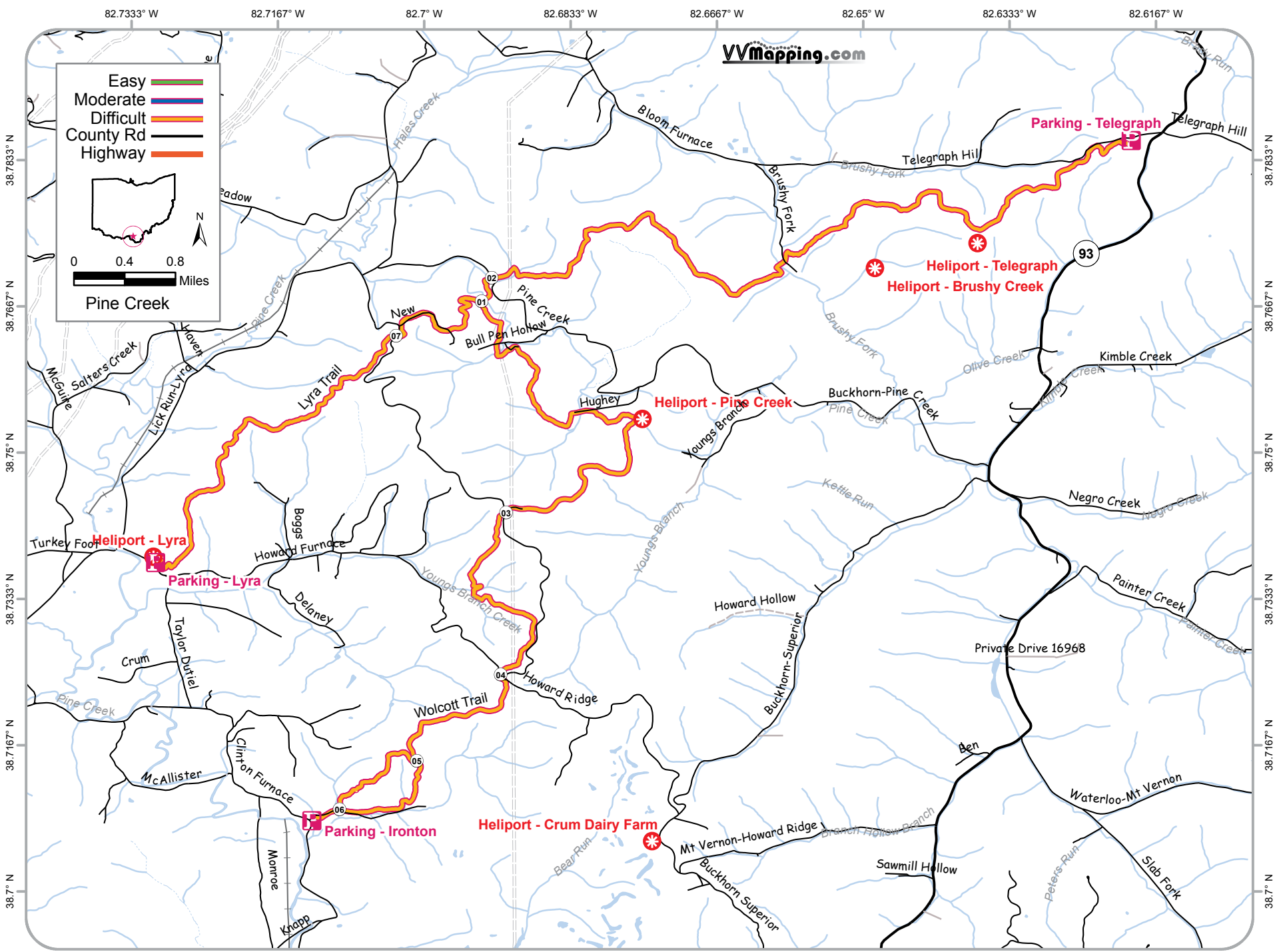


Easy   
Moderate   
Difficult   
County Rd   
Highway 



0 0.4 0.8 Miles

Pine Creek



## ORV/OHV Trail Information for Wayne National Forest

Contact the WNF: <http://www.fs.fed.us/r9/wayne/> or (740)753-0101

Trails are open to all ORVs less than 50" in width. All trails are marked with orange diamonds - stay on marked trails only. Trails are rated for various levels of difficulty ranging from Easy to Moderate to Difficult (or Easy/Difficult/Most Difficult). Trails are closed from December 15th through April 15th to protect the trails from excessive seasonal damage.

All riders must have a current operators license and each ORV must have an Ohio APV license/registration. Each rider must also have a Trail Permit from the Wayne National Forest.

ORVs must have working brake systems. Headlights and taillights are required if riding 30 minutes before sundown through 30 minutes before sunrise.

Ride safe and sober!

### Trailheads

#### Hanging Rock

Hanging Rock - Highway 52 to Highway 650. Turn north on Forest Road 105, continue for a mile and a half to parking area.

#### Pine Creek

Telegraph - Highway 93 to County Rd 193. Parking area is 1/8 mile up CR193.

Lyra - County Road 2 to Township Rd 307.

Wolcott - State Road 93 to Highway 522 (west). Highway 522 to County Road 9.

Trailhead is 3 miles up CR9.

#### Monday Creek

New Straitsville - 2 miles south of New Straitsville on Highway 595.

Dorr Run - 2 Miles south of Highway 595 on Highway 33, follow signs (Five Trailheads).

Monday Creek - 2 Miles north of Highway 78 (Burr Oak Rd) on County Road 24 (Carbon Hill Buchtel Rd).

Long Ridge - Highway 78, 1.5 miles north of Buchtel.

*Note coordinates are in Decimal Degrees HDD.DDDD  
Please make sure your GPS is set the same.*

Parking - Elm .....	N39.48202 W82.29241
Parking - Hanging Rock.....	N38.58083 W82.72472
Parking - Ironton .....	N38.70809 W82.71276
Parking - Long Ridge .....	N39.48323 W82.18151
Parking - Lyra .....	N38.73750 W82.73056
Parking - Monday Creek .....	N39.49165 W82.21215
Parking - New Straitsville.....	N39.57258 W82.24442
Parking - Red Oak .....	N39.48559 W82.29134
Parking - Scarlet Oak.....	N39.48185 W82.28691
Parking - Sycamore .....	N39.47789 W82.31047
Parking - Telegraph.....	N38.78558 W82.61944
Parking - White Oak.....	N39.49376 W82.28149